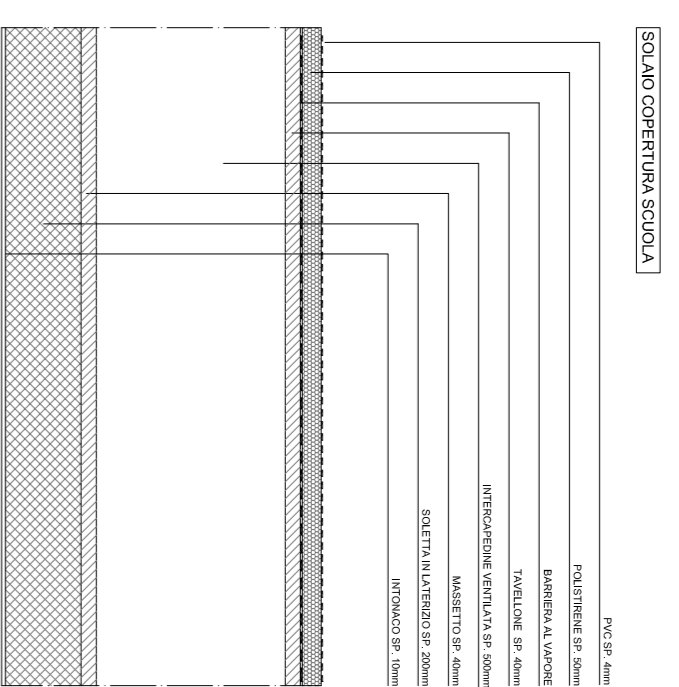


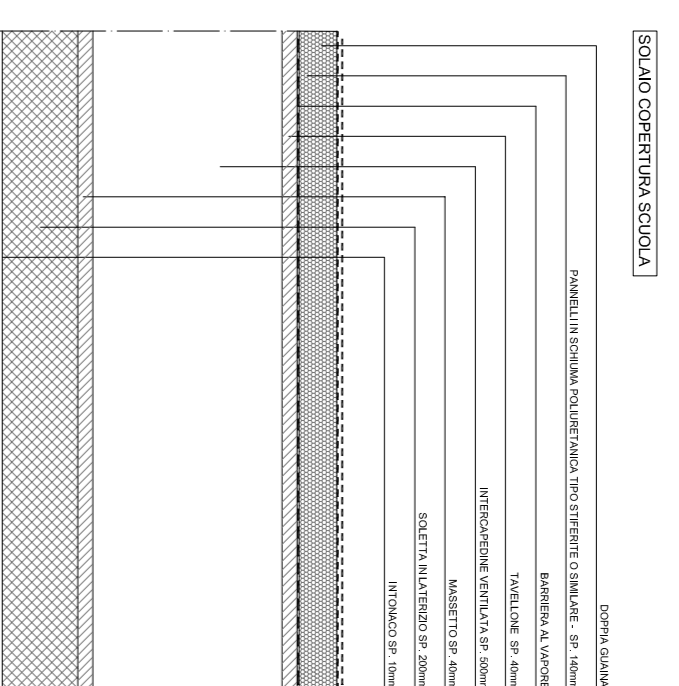
# INTERVENTO SU ESISTENTE

## CHIUSURE ORIZZONTALI

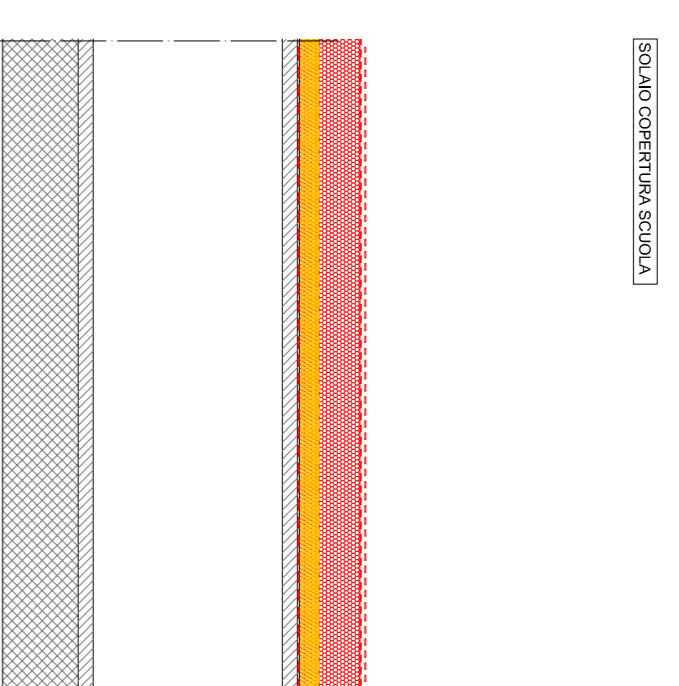
STATO DI FATTO



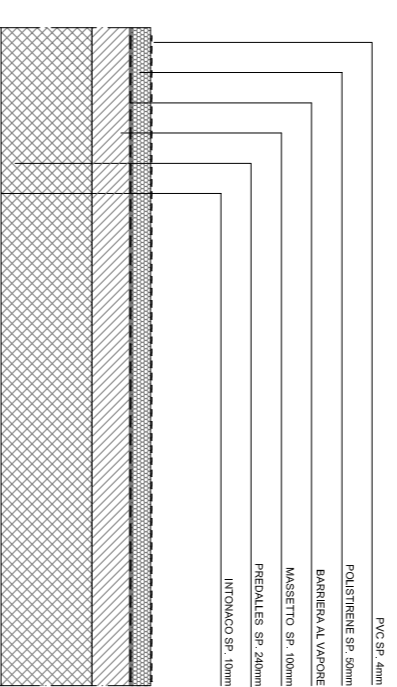
PROGETTO



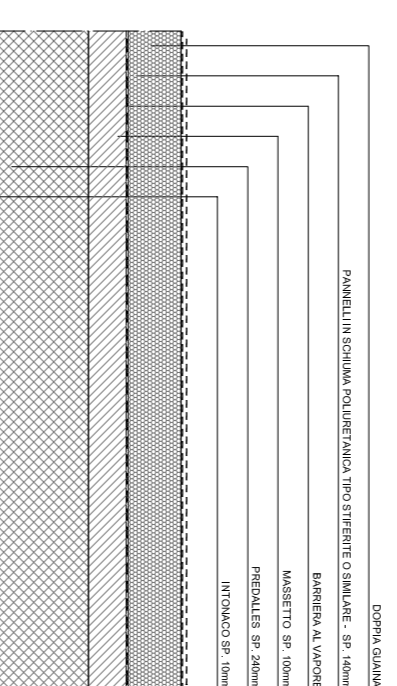
CONFRONTO



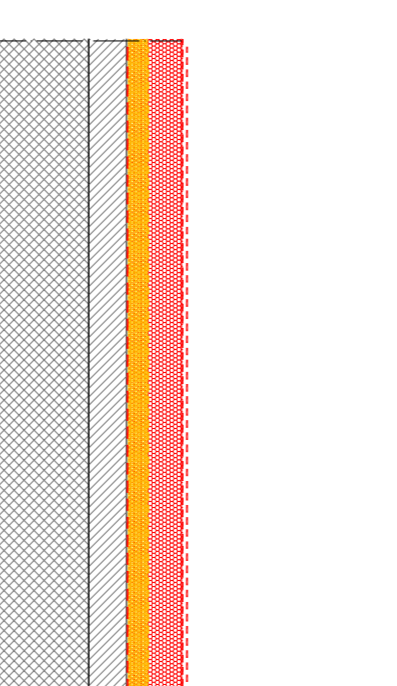
SCALD COPERTURA SPOGLIANTI



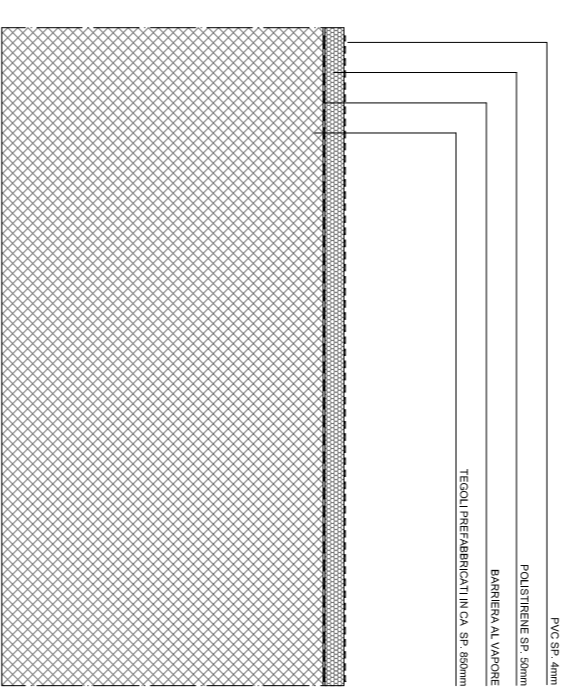
SCALD COPERTURA SPOGLIANTI



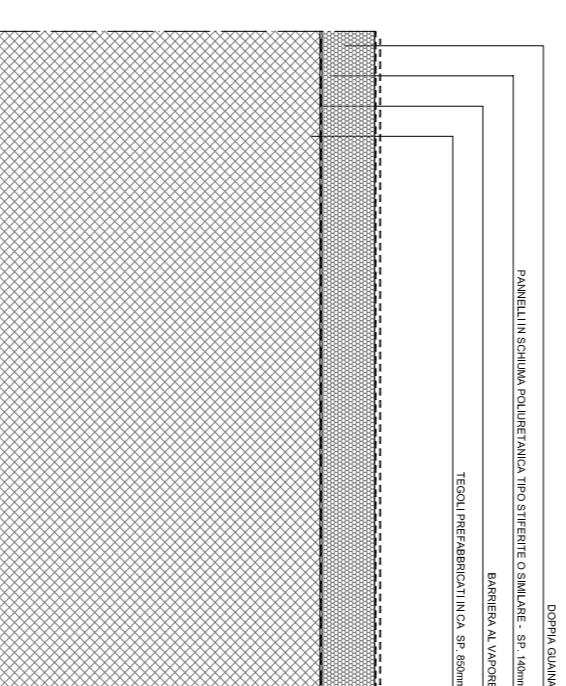
SCALD COPERTURA SPOGLIANTI



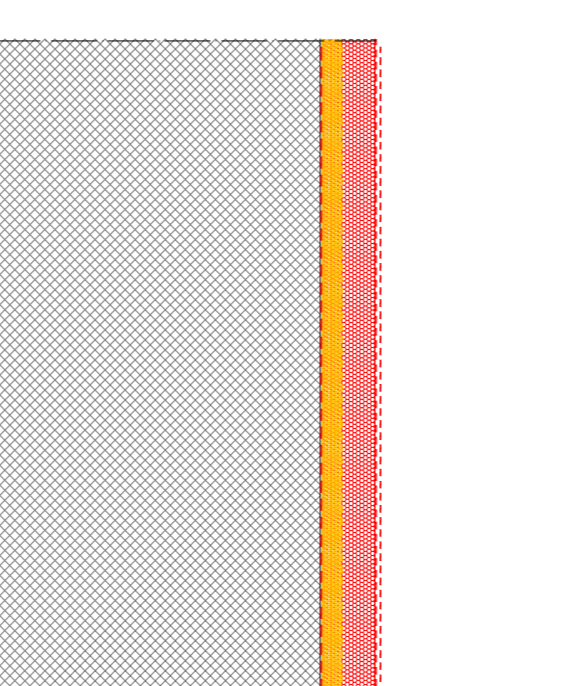
SCALD COPERTURA PALESTINA



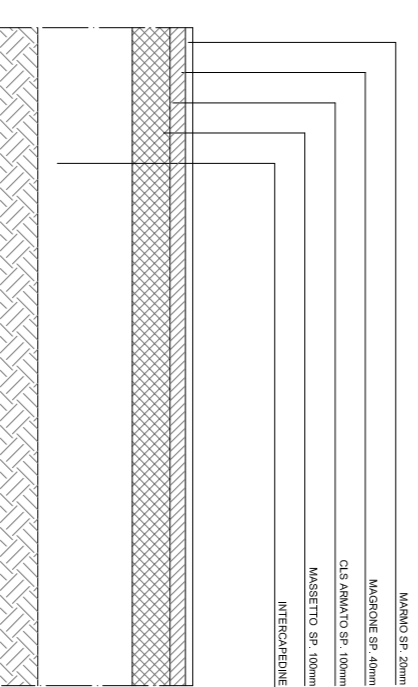
SCALD COPERTURA PALESTINA



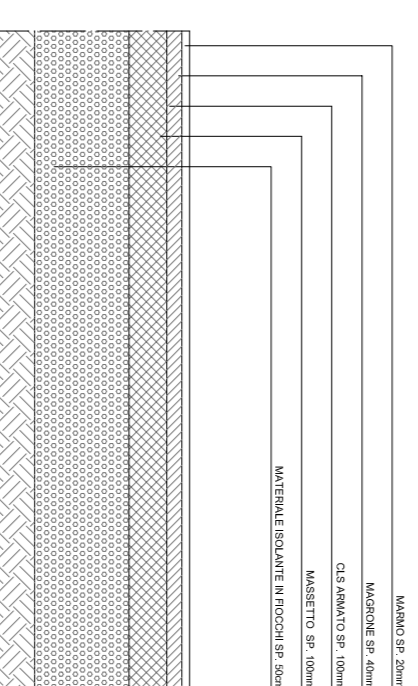
SCALD COPERTURA PALESTINA



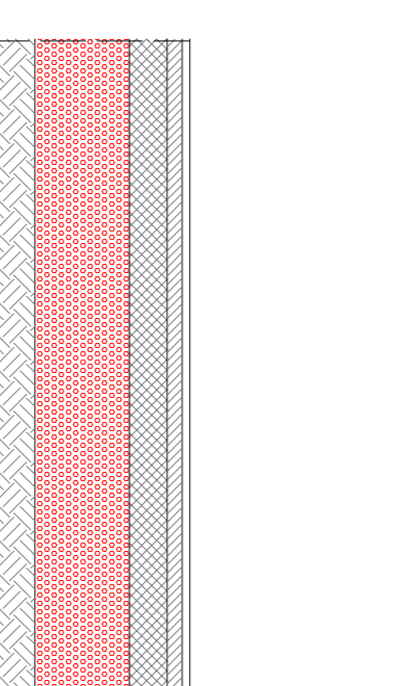
SCALD COPERTURA SCUOLA



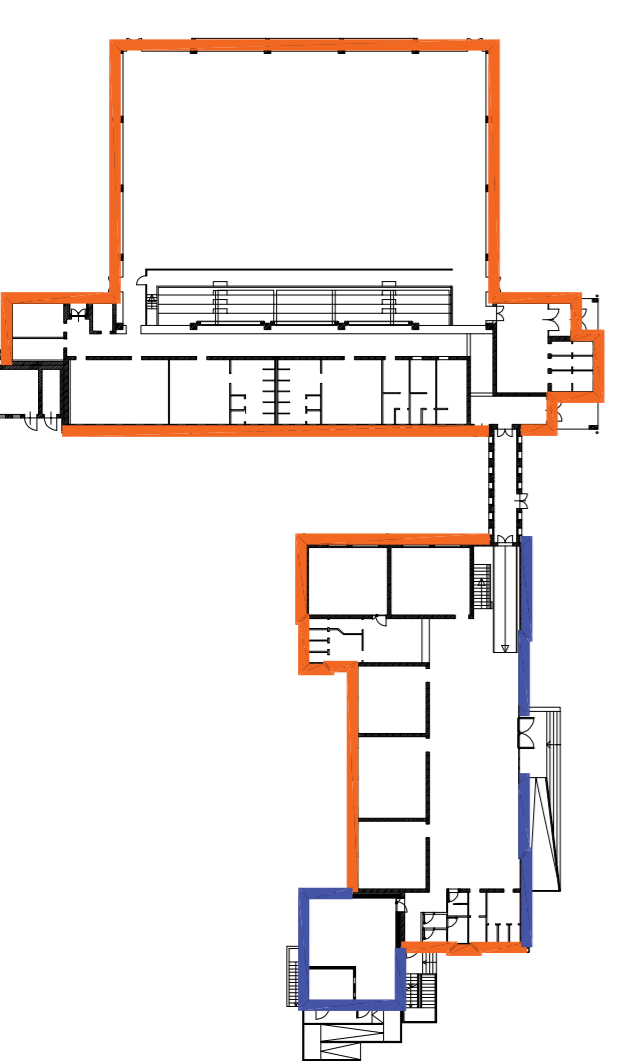
SCALD COPERTURA SCUOLA



SCALD COPERTURA SCUOLA



SCHEMA - SPessori DEL PANNELLO DI ISOLAMENTO DELLE STRUTTURE VERTICALI OPACHE

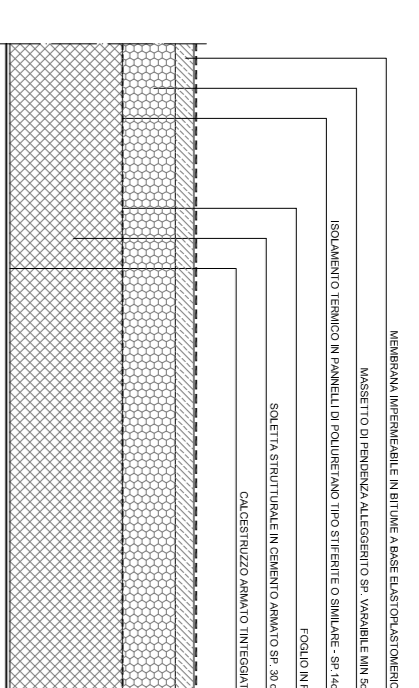


isolamento a cappotto con pannelli in schiuma poliuretamica da 14 cm

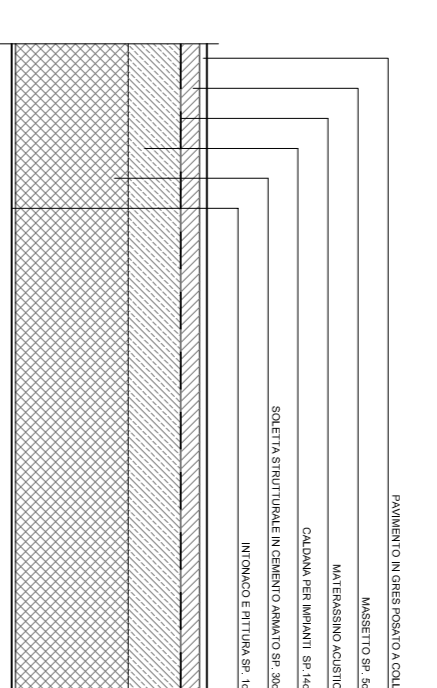
isolamento a cappotto con pannelli in schiuma poliuretamica da 18 cm

# NUOVO BLOCCO REFETTORIO

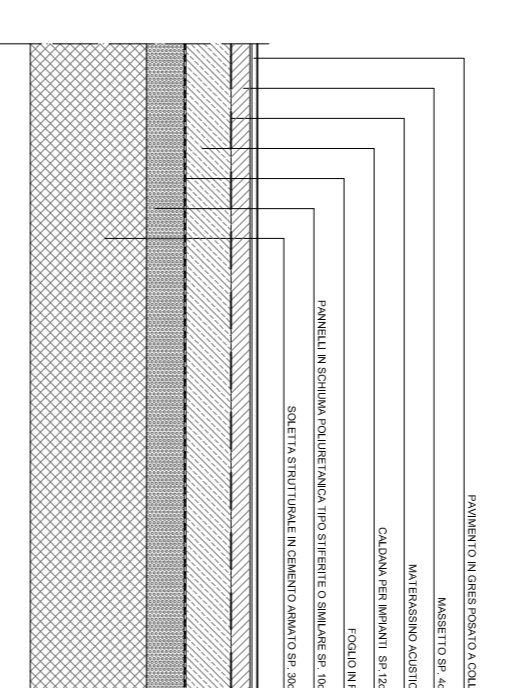
COPERTURA



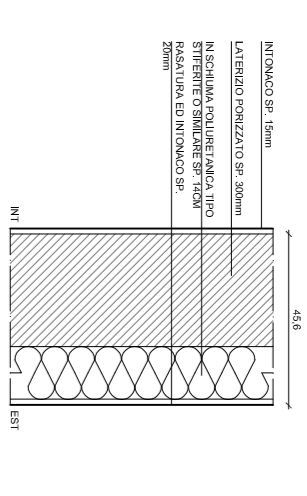
SCALD INTERNO - T-150T



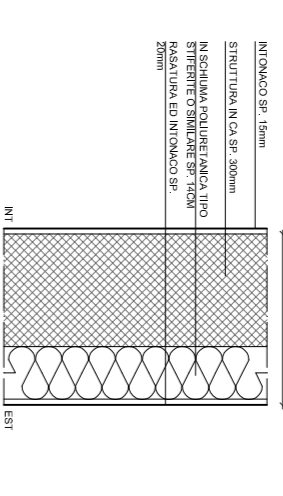
SCALD INTERNO - T-150T



CHIUSURA VERTICALE NUOVO BLOCCO - TAMPONAMENTO

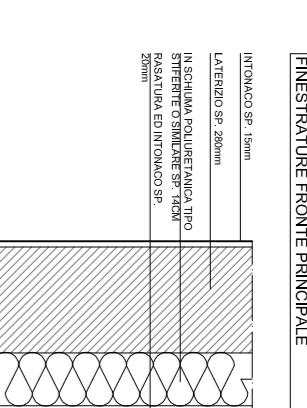


CHIUSURA VERTICALE NUOVO BLOCCO - STRUTTURE CA

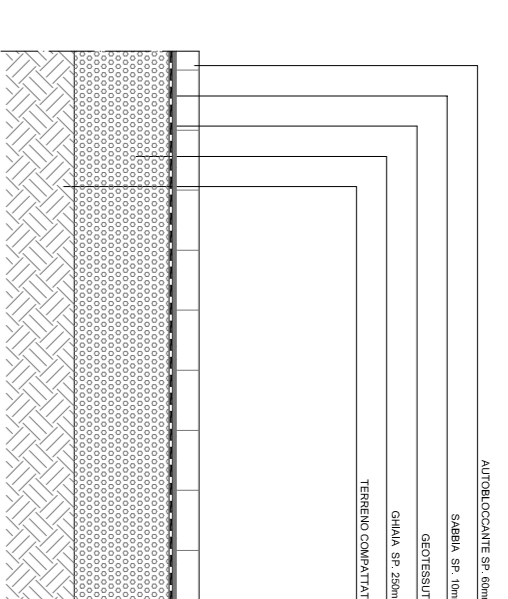


# TAMPONAMENTO FINESTRATURE FRONTE PRINCIPALE

TAMPONAMENTO FINESTRE E ARD-PRIVE



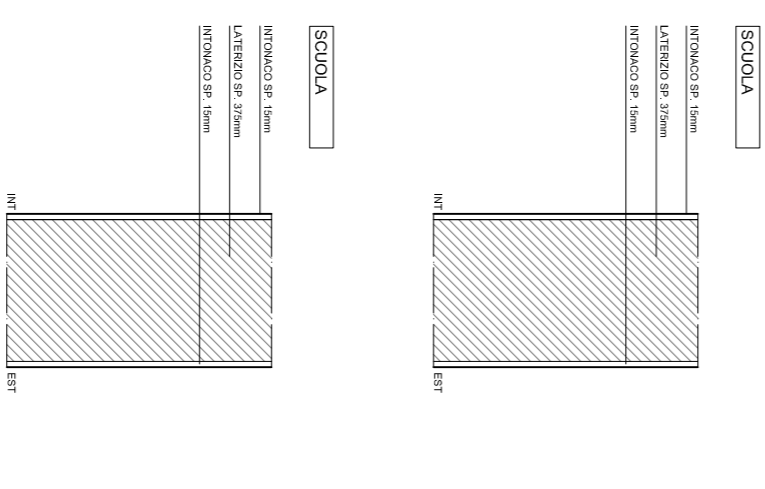
NUOVA PAVIMENTAZIONE ESTERNA FRONTI NONO



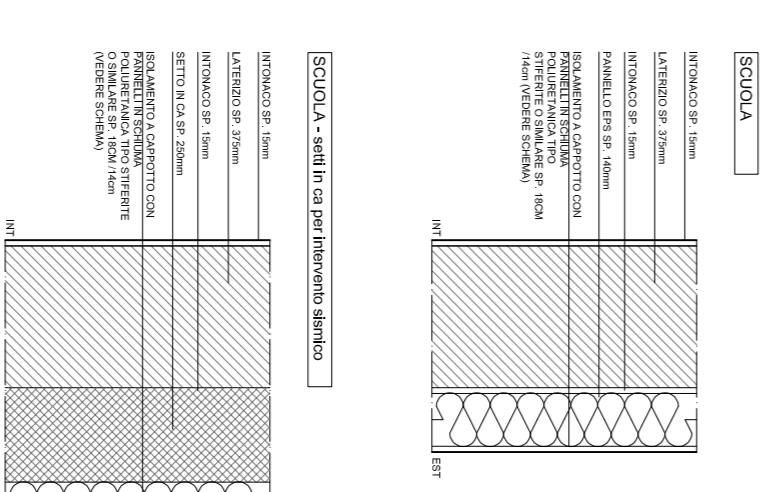
# INTERVENTO SU ESISTENTE

## CHIUSURE VERTICALI

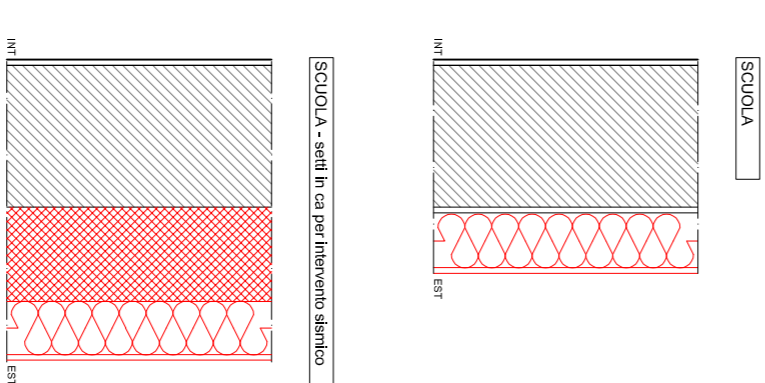
STATO DI FATTO



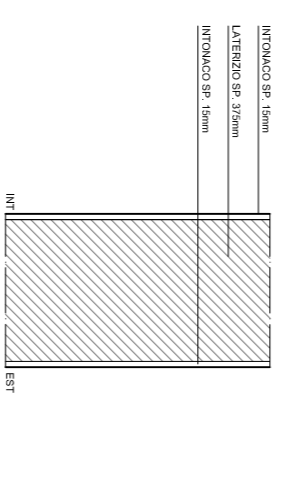
PROGETTO



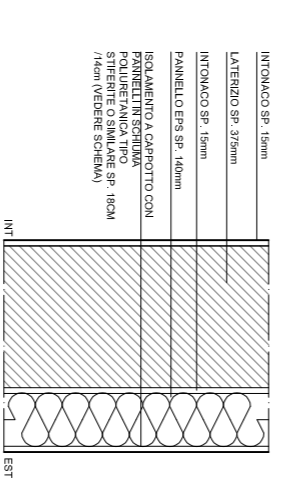
CONFRONTO



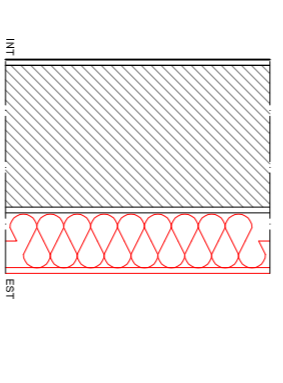
SCUOLA



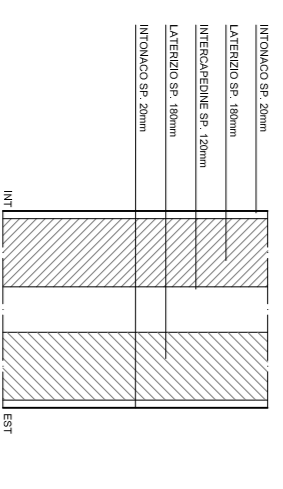
SCUOLA



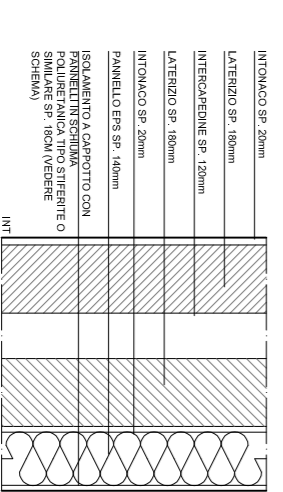
SCUOLA



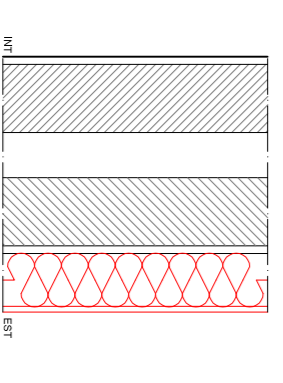
PALESTINA - TAMPONAMENTO



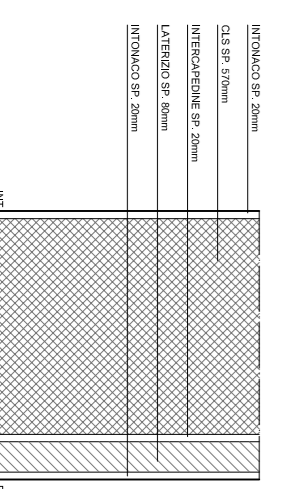
PALESTINA - TAMPONAMENTO



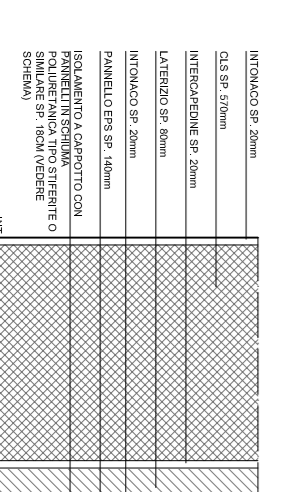
PALESTINA - TAMPONAMENTO



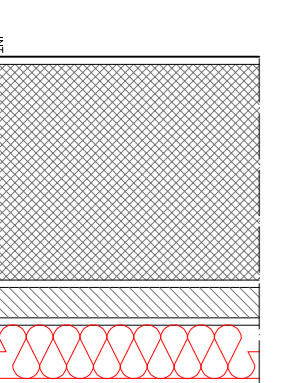
PALESTINA - PALESTRINCA



PALESTINA - PALESTRINCA



PALESTINA - PALESTRINCA



- NOTE**
- In tutte le opere studiate, riferirsi alle relative tavole
  - per le opere impiantistiche riferirsi alle relative tavole
  - per le opere impiantistiche riferirsi alle relative tavole
  - per i dettagli nell'esecuzione dell'isolamento riferirsi a capofila seguire il Manuale Certema o la documentazione tecnica ed i disegni forniti dal detentore del sistema
  - seramenti:
    - tutti i controlli del seramento devono essere fatti al momento che esternamente con idonei mezzi da sottoporre a verifica della D.L. il seramento va posto con spessore minimo di 1,5cm dalla muratura
    - il seramento va posto con spessore minimo di 1,5cm dalla muratura
    - prevedere un controllo sul quarto lato per tutti i seramenti
  - le macchie ed i modelli riportati sono puramente indicativi; sono da ritenersi come riferimento per le caratteristiche tecniche, si possono considerare quindi materiali equivalenti.

COMUNE DI BREDA DI PIAVE  
PROVINCIA DI TREVISO

OPERE DI ADEGUAMENTO SISMICO ED ENERGETICO DELLA SCUOLA PRIMARIA DI SALETTO BREDA DI PIAVE

**PROGETTI**

VIA GEMINALE 8 25124 BRESCIA  
TEL. +39 030 2461210  
www.gemini.it

**PROGETTO ARCHITETTONICO**

nome file: 20167\_A20\_strutturativo

revisione studio: 01 - 2021/03/12

**A 20**